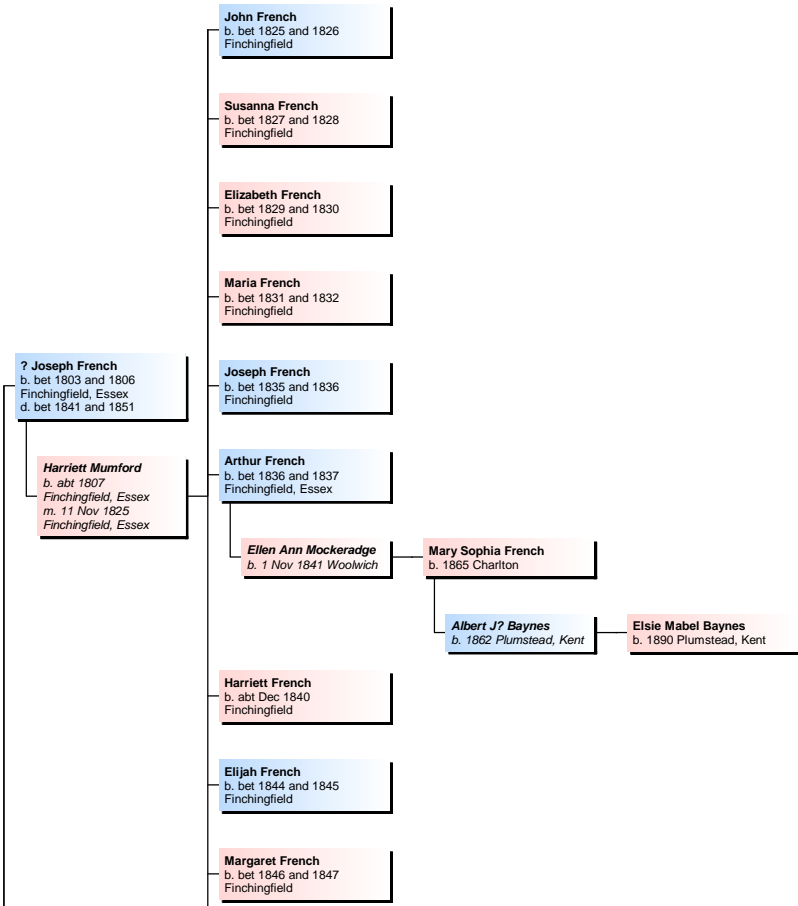
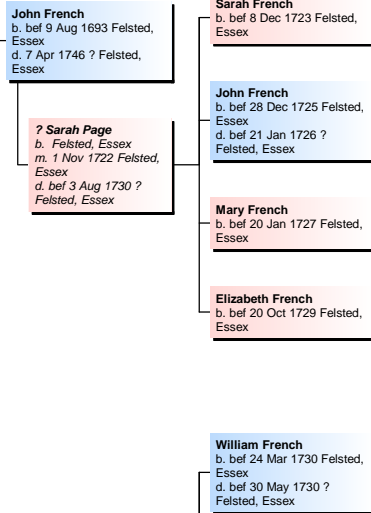




11 Generation Descendant Tree of William French & Elizabeth Drane

as of 26-May-2013
(quite speculative prior to early 1700s)



Josechah French
b. May 1850 Finchingfield,
Ess

Elizabeth French
b. bet 1835 and 1836
Braintree

Eliza French
b. bet 1836 and 1837 Rayne
d. bef 20 May 1892 ??
Rayne, Essex

William French
b. bet 1863 and 1864 Rayne,
Essex
d. aft 1911

Emily Eliza Butcher
b. bet 1867 and 1868
Stifford, Essex
m. bet Jul and Sep 1887
Orsett, Essex
d. aft 1911

Fred French
b. bet Jan and Mar 1865
Rayne, Essex
d. bet Apr and Dec 1881
Bethnal Green / ? or Poplar

Henry French

Annie L Unknown
b. bet 1864 and 1865
Orsett, Essex

Alfred John French
b. bet 1889 and 1890 East
Tilbury, Essex
d. aft 1911

Henry Edward French
b. bet 1898 and 1899
Stifford, Essex
d. aft 1911

Christopher French
b. bet 1906 and 1907 Noak
Hill Romford Essex
d. aft 1911

Marion French
b. abt Mar 1891 Leyton,
Essex

William H French

Ellen Mabel French
b. bet 1886 and 1887
Hackney
d. aft 1911

Cecilia Maud French
b. bet 1897 and 1898
Hackney
d. aft 1911

John Alfred French
b. bet Apr and Jun 1900
Hackney
d. bet Apr and Jun 1902
Hackney

Ethel Agnes French
b. bet 1903 and 1904
Hackney
d. aft 1911

Ernest Fred French
b. bet 1905 and 1906
Chelmsford
d. aft 1911

? Frank French

Henry French
b. bet 1805 and 1806
Panfield, Essex, near CM7
5AJ
d. bef 30 Nov 1883 ? Rayne,
Essex

Sarah Unknown
b. bet 1802 and 1803
Rayne
d. bef 18 Jul 1884 ?
Rayne, Essex

William French
b. bet 1841 and 1842
Braintree, Essex

Mary Ann Root
b. bet 1842 and 1843
Little Saling, Essex

Alfred John French
b. bet 1869 and 1870 Black
Notley, Essex
d. aft 1911

Ellen Mabel Lloyd
b. bet 1866 and 1867
Felstead, Essex
m. bet Jan and Mar
1896 Hampstead, Essex
d. aft 1911

Eliza French
b. 1871 Black Notley, Essex

? Alfred Bowler
b. bet 1869 and 1870
Swanbourne,
Buckinghamshire

? Esther G Bowler

? John Bowler

Arthur Edward French
b. bet 1876 and 1877 Black
Notley, Essex
d. aft 1891 ?

(--)?

Albert E French
b. bet Apr and Jun 1878
Black Notley, Essex

Albert Reginald French

Kate Harriet
b. bet 1879 and 1880
Shoeburyness, Essex
m. bet Apr and Jun 1905
Rochford, Essex

Lenard Walter French

Eva M French

Kathleen E M French

Sarah A French
b. bet 1879 and 1881 Black
Notley, Essex

Ernest French
b. bet 1882 and 1883 Black
Notley, Essex

Alice E French
b. bet 1883 and 1884 Black
Notley, Essex

John French
b. bet 1844 and 1845
Braintree, Essex
d. aft 1901

Frederick H French
b. bet 1872 and 1873 East
Tilbury, Essex
d. aft 1901

Emily A Unknown
b. 1852 Latchingdon,
Essex
d. aft 1901

Alice Mary French
b. bet 1874 and 1875 East
Tilbury, Essex
d. aft 1901

Ernest French
b. bet 1875 and 1876 East
Tilbury, Essex
d. aft 1901

Albert French
b. bet 1878 and 1879 East
Tilbury, Essex
d. bet 1901

Ann French
b. bet 1828 and 1829
Panfield, Essex, near CM7
SAJ

? Roseanna Page

? Henry Page
b. bet 1825 and 1826
Boxted, Suffolk

? William Page
b. bet 1849 and 1850
Panfield, Essex, near CM7
SAJ

John French
b. bef 13 Feb 1780
Finchingfield, Essex
d. aft 1841

Elizabeth Unknown
b. aft 1780
d. bef 1841

Robert French
b. bet 1831 and 1832 Rayne,
Essex
d. bet 1881 and 1901

Susannah Unknown
b. bet 1832 and 1833
Braintree, Essex
d. aft 1881

James French

Emma Unknown
b. bet 1856 and 1857
Bocking, Essex

Florence E French
b. abt Mar 1881 Bocking,
Essex

Sarah A Unknown
b. abt 1854 Birmingham,
Warwickshire, near B2
4RN

Lily French
b. bet 1891 and 1892
Birmingham, Warwickshire,
near B2 4RN
d. 1970

Emma H French

Lucy French
b. bet 1883 and 1884
Bocking, Essex

Martin French
b. abt 1862 Black Notley,
Essex
d. aft 1901

Emily French
b. bet 1885 and 1886
Bocking, Essex

Abigail Aust
b. 1867 Great
Coggeshall, Essex
m. abt 1883
d. aft 1901

Alice French
b. bet 1886 and 1887
Bocking, Essex

Annie French
b. bet 1890 and 1891
Stratford, Essex

Martin French
b. bet 1833 and 1834
Braintree
d. bet 1871 and 1881

May French
b. bet 1893 and 1894
Stratford, Essex

Rebecca Willson
b. abt 1837 Braintree
m. 1855
d. abt 1891 Braintree

James French

Ellen French

George William French

Daisey French
b. abt 1884 Braintree, Essex

Harriett Unknown
b. abt 1865

Agnes French
b. abt 1887 Braintree, Essex

Arthur French
b. abt 1888 Braintree, Essex

Emily A French

Sarah Hanl French

Elizabeth R French

Edward M French

James French
b. 23 Jun 1808 Shallford,
Essex
d. bet 1871 and 1881

Hannah Adams
b. bet 1807 and 1808
Rayne
m. 25 Dec 1830 Rayne,
Essex
d. bef 1871

Annie French
b. bet 1865 and 1866
Bocking, Essex

Hannah French

Walter French

Anna Maria French
b. bet 1862 and 1863
Felsted, Essex

Mary French
b. 1863 Felsted, Essex

Elizabeth French
b. abt 1865 Felsted, Essex

Caroline French
b. bet 1866 and 1867
Felsted, Essex

James French
b. bet 1868 and 1869
Felsted, Essex
d. bet Oct and Dec 1938
Chelmsford, Essex

Timothy James French
b. 28 Apr 1899 Springfield,
Essex
d. bet Jul and Sep 1977
Chelmsford, Essex

Ada French

Ada Maria Norfolk
b. bet Jul and Sep 1874
Alkham, Lexden, Essex
m. bet Apr and Jun 1898
Lexden, Essex
d. bet Jan and Mar 1964
Chelmsford, Essex

Christopher French
b. 1 Dec 1900 Springfield,
Essex
d. bet Apr and Jun 1972 ?
Chelmsford, Essex

Ruth May French

Lily Elizabeth French

Mary French

Timothy French
b. bet 1840 and 1841
Panfield, Essex, near CM7
SAJ
d. aft 1881

Sarah Thorogood
b. bet 1846 and 1847
Braintree, Essex
m. bet Oct and Dec
1862 Braintree
d. aft 1881

Samuel French
b. bet 1870 and 1871 Rayne,
Essex

Sylvia Victoria French

Samuel French

Sylvia Beck
b. 1870 Gloucester
m. 1896

William Edward French

George French

Annie French

Ann Marian French
b. bet 1872 and 1873
Felsted, Essex

Ada Mary French

William Henry French
b. bet 1876 and 1877
Felsted, Essex
d. bef 1901

John French
b. bef 9 Jan 1757
Finchingfield, Essex
d. not known - just a guess

Anna Cracknell
b. bef 3 Oct 1749
Finchingfield, Essex
m. 17 Nov 1778 St John,
Church Hill,
Finchingfield, Essex,
CM7 4NN
d. not known

Joseph French
b. 23 Jun 1806 Shalford,
Essex

? Unknown French
b. bet 1811 and 1816

? Martin French
b. bet 1812 and 1813
Braintree
d. bef 1881

? Mary Unknown
b. bet 1805 and 1806
Coggeshall

? Unknown French
b. bet 1816 and 1821

Elizabeth French

Kate Sarah French
b. 1880 Felsted, Essex
d. aft 1901

Ann French
b. bet 1830 and 1831
Coggeshall

James French
b. bet 1837 and 1838
Braintree

Mary Ann French
b. bef 14 Sep 1828 Panfield,
Essex, near CM7 5AJ
d. bet Apr and Jun 1895
Rochford, Essex

Elizabeth French
b. bef 18 Jul 1830 Panfield,
Essex, near CM7 5AJ
d. bef 30 Nov 1859 Kings
College Hospital, London

Mina Louisa French
b. abt Aug 1860 Bardfield
Saling, Essex

Frederick William French
b. abt Jun 1863 Great
Saling, Essex
d. bef 2 Nov 1942 Great
Saling, Essex

Maria? Louisa Watkins
b. bet Oct and Dec 1868
Southsea, Hampshire
m. bet Apr and Jun 1897
Portsea, Hampshire
d. bef 23 Feb 1952
Great Saling, Essex

Ethel Mary French

Margaret French

Arthur John French
b. bef 2 Aug 1833 Panfield,
Essex, near CM7 5AJ
d. 17 Feb 1915 Great Saling,
Essex

Constance French
b. 10 Sep 1864 Great
Saling, Essex
d. aft 1951 ?

Maria Louisa Bowler
b. bet 1831 and 1832
Pimlico, London
m. bet Oct and Dec
1859 St George
Hanover Square, Mill
Street, Westminster,
W1S 1FX
d. 23 May 1909 Great
Saling, Essex

Edith Holly French
b. abt Sep 1866 Great
Saling, Essex
d. bef 5 Dec 1940 Great
Saling, Essex

Arthur Olley

William Olley
b. abt Aug 1900 Great
Saling, Essex
d. bef 13 Oct 1966 Great
Saling, Essex

Gladys Winifred Olley
b. bet Oct and Dec 1902
Great Saling, Essex
d. bef 19 Apr 1932 Great
Saling, Essex

Ephraim Olley
b. bet 1857 and 1858
m. bet Jul and Sep 1897
Braintree
d. bef 22 Nov 1916
Great Saling, Essex

Jack Martin Olley

Cyril Frederick Olley
b. 25 May 1908 Great Saling, Essex
d. Dec 1988 Chelmsford, Essex

Frank Olley
b. 10 Jun 1910 Great Saling, Essex
d. Jan 2003 Chelmsford, Essex

Florence Ellen French
b. 20 Dec 1875 Great Saling, Essex
d. bet Oct and Dec 1912 Great Saling, Essex

Alice Emma Byford
b. bet Oct and Dec 1858 Felsted, Essex
d. bet Jan and Mar 1880 ? St Georges Hanover Square

Ernest Alfred Byford
b. bet 1861 and 1862 Felsted, Essex
d. aft 1911

Eliza Katherine Gibbs
b. bet Jan and Mar 1862 Winslow, Buckinghamshire
m. bet Oct and Dec 1896 Winslow, Buckinghamshire
d. aft 1911

Ernest G? Edwin? Byford

Victor James Kimm
b. bet Apr and Jun 1890 Turnham Green, London

Edith Emily Byford
b. bet Jul and Sep 1864 Chelmsford, Essex
d. bet Apr and Jun 1913 Thanet, Kent

Harold Laurance Kimm
b. bet Jul and Sep 1892 Brentford, Essex
d. bet Jan and Mar 1893 Brentford, Essex

James Kimm
b. bet 1863 and 1864 Boreham, Essex
m. bet Jul and Sep 1886 Islington

Dorothy Emma Kimm

Cyril Redvers Kimm
b. abt Sep 1900 Margate, Kent
d. bet Jul and Sep 1901 Thanet, Kent

Stanley Edward Kimm
b. 28 Oct 1902 Margate, Kent
d. Aug 1988 Oxford, Oxfordshire

Phoebe Lavinia Byford
b. bet Jul and Sep 1866 Chelmsford, Essex
d. bet Apr and Jun 1889 Brenford

Emma French
b. 1833 Great Saling, Essex
d. bet Apr and Jun 1896 Chelmsford, Essex

Harry Byford

Pharoah Byford
b. bet 1830 and 1831 Bardfield Saling, Essex
m. bet Jul and Sep 1856 Braintree
d. bet Oct and Dec 1915 Chelmsford, Essex

Harry Albert Byford
b. bet Jan and Mar 1869 Chelmsford, Essex
d. bet Oct and Dec 1911 Richmond, Surrey

Lillian Beatrice Byford

Violet Constance Byford
b. bet Oct and Dec 1898 Southend-on-Sea, Essex
d. Apr 1991 ?? Chester and Ellesmere Port, Cheshire

William French
b. bef 12 Jan 1806 Panfield,
Essex, near CM7 5AJ /
Panfield, Braintree, Essex,
near CM7 5AJ
d. 28 Oct 1884 Great Saling,
Essex, near CM7 5EN

Phoebe Joyce
b. bef 9 Aug 1807 Great
Saling, Essex, near CM7
5EA / ?
m. 22 Jun 1827 St Mary,
Panfield, Essex, near
CM7 5AJ
d. 24 Apr 1866 Great
Saling, Essex, near CM7
5EA / near Woolpits,
Great Saling, Essex,
near CM7 5EA

Charlotte Joyce French
b. 23 Feb 1836 Great Saling,
Essex
d. bef 15 Jul 1892 Great
Saling, Essex

Sarah French
b. 28 Oct 1840 Great Saling,
Essex
d. bet Jan and Mar 1914
Wandsworth, London

William Beddall
b. bet 1828 and 1831
Great Saling, Essex
m. bet Oct and Dec
1867 Braintree, Essex
d. bet Oct and Dec 1902
Wandsworth, London

**Elizabeth Florence
Smith**
b. bet Apr and Jun 1869
Battersea
m. bet Apr and Jun 1895
Wandsworth, London

Emily Maud Byford
b. 26 Jun 1901
Southend-on-Sea, Essex
d. Mar 1986 Greenwich

Frederica Robey Byford

Alice Lillian Byford

Anne H Byford
b. bet 1870 and 1871
Chelmsford, Essex

Minnie Beatrice Byford
b. bet Apr and Jun 1873
Rainford End, Chelmsford,
Essex

Richard Wright
b. bet 1859 and 1860
Harleston, Norfolk
m. bet Apr and Jun 1908
Islington

Janet Florence? Wright
b. bet Oct and Dec 1912 ?
Spalding, Lincolnshire
d. Jan 1991 ? Birmingham,
Warwickshire, near B2 4RN

Maggie W Wright

Alexander G B Wright

Flora A Wright

Herbert Lawrence Byford
b. bet Apr and Jun 1875
Little Baddow, Essex
d. bet Jan and Mar 1939 ??
Colchester

Janet Julia Byford
b. bet Jan and Mar 1877
Little Baddow, Essex

Edmund Whybrow
b. abt 1879 Halstead,
Essex
m. bet Oct and Dec
1906 Brentford

Diana Rosalie Whybrow

Frances Gertrude Byford
b. bet Oct and Dec 1881
Little Baddow, Essex

Thomas D Swallow
b. bet 1864 and 1865
Little Waltham, Essex
m. bet Jan and Mar
1911 Chelmsford, Essex

Ida Elsie Swallow
b. 29 Dec 1911 Chelmsford,
Essex
d. Dec 2005 Chelmsford,
Essex

Ralph E Swallow

George William Swallow
b. 2 Feb 1903 Chelmsford,
Essex
d. Sep 1987 Chelmsford,
Essex

Horace Whitehead Beddall
b. 25 Nov 1868 Great
Saling, Essex
d. bet Jan and Mar 1933
Wandsworth, London

Elizabeth Jane Baker
b. bet 1872 and 1873
Wivenhoe, Essex
m. bet Apr and Jun 1905
Wandsworth, London
d. aft 1991

Kenneth William Beddall
b. 24 Jun 1911 Wandsworth,
London
d. Dec 1988 Worthing, West
Sussex

John French
b. bef 5 Jan 1663 Felsted,
Essex
d. bef 7 Apr 1746 ? Felsted,
Essex

Anne Unknown
m. Unknown Felsted,
Essex / ? [no marriage
records there 1642-94]

William French
b. bef 16 May 1695 Felsted,
Essex
d. bef 29 Sep 1754 ?
Felsted, Essex

Elizabeth Page
b. bet 1698 and 1699
Felsted, Essex
m. 17 Jun 1729 Holy
Cross, Felsted, Essex,
near CM6 3DQ
d. bef 6 Aug 1771 ?
Felsted, Essex

William French
b. bef 13 Oct 1782
Finchingfield, Essex
d. 22 Aug 1810 The
Retribution, Woolwich, Kent

Charlotte Willis
b. bef 7 Mar 1784
Shalford, Essex
m. 20 Nov 1804 St
Mary, Panfield, Essex,
near CM7 5AJ
d. 6 Mar 1860 Shalford,
Essex

William French
b. 21 Mar 1843 Great
Saling, Essex, CM7 5EA /
presumably Woolpits
Cottages, Woolpits Road,
Great Saling, Braintree,
Essex, CM7 5EA
d. 27 Sep 1899
Southend-on-Sea, Essex,
SS2 5BU / Died in The
Barracks, Shoeburyness
presumably while living at 8
Milton Street, Prittlewell,
Southend-on-Sea, Essex,
SS2 5BU

Sophia Dadson
b. bef 9 Nov 1836
Yalding, Kent, near
ME18 6HS / The Village,
Yalding, [Maidstone],
Kent, near ME18 6HS
m. 23 Feb 1864 All
Saints, Rotherhithe,
SE16 2PW / 16 Reed
Street], Southwark,
Rotherhithe, London,
SE16 2PW
d. 1 Jul 1903 8 Milton
Street, Prittlewell,
Southend-on-Sea,
Essex, SS2 5BU

Charles Vincent Beddall
b. 14 Mar 1871 Great
Saling, Essex / born 14th
illegible says parish
register... say "March"? -
bcause April census has age
one month
d. bet Apr and Jun 1873
Braintree, Essex

Annie Gertrude French
b. 10 Mar 1865
Bermondsey, Surrey
d. 16 May 1927
Southend-on-Sea, Essex

Ellen Frances French
b. 7 Dec 1866 Cripplegate,
East London, Middlesex
d. 28 Sep 1930 St Albans,
Hertfordshire, near AL1 3JG

William Matthews
b. bet Jul and Sep 1861
Welwyn, Hertfordshire
m. bet Jul and Sep 1891
Hatfield, Hertfordshire
d. bet Jul and Sep 1939
St Albans, Hertfordshire,
near AL1 3JG

Samuel George French
b. 29 Jun 1869 Bethnal
Green, London
d. 3 May 1937
Westmorland, New
Brunswick, Canada

**Norah Gertrude
Connolly**
b. bet 1881 and 1882 St
Pancras or Battersea
m. 25 Jul 1906 Hockley,
Essex
d. aft 1958 ?

**Mildred Gwendoline
French**
b. 28 Jul 1904 Rochford,
Essex
d. aft 1958

Samuel Charles French
b. 15 Jan 1908 Moncton,
Westmorland, New
Brunswick, Canada
d. 7 Apr 1985

Harry James French

William Arthur French
b. 3 Aug 1873 Deptford,
Kent
d. 6 Oct 1925
Southend-on-Sea, Essex

Frederick Charles French
b. 1 Sep 1875 Marsh Road,
Little Kimble, Aylesbury,
Buckinghamshire, near
HP22 5XS / Was Marsh,
Great Kimble, near
Wendover,
Buckinghamshire, HP22
5XS
d. 12 Mar 1944 [Christowell]
12 Green Lane, Letchworth,
Hertfordshire, SG6 1EB /
thought to be demolished



Frederick Gordon French
b. 24 Jun 1915
Southend-on-Sea, Essex.
SS2 5JG / 33 Wimborne
Road, Southend-on-Sea,
Essex, SS2 5JG
d. 30 Mar 1977
Southend-on-Sea, Essex,
SS1 3BB / Christowell, 24
Thorpe Esplanade, Thorpe
Bay, Southend-on-Sea,
Essex, SS1 3BB



? James French
b. bet 1785 and 1786 ?
Finchingfield, Essex
d. bef 7 Jan 1789

Steel French
b. abt Jun 1808 ? Panfield,
Essex
d. bef 24 Jan 1882 Shalford,
Essex

Hannah Plastow
b. bet 1805 and 1807
Stisted, Essex
m. 28 Oct 1828 Panfield,
Essex, near CM7 5AJ
d. May 1884 Shalford,
Essex

Susannah French
b. abt 1829 Panfield, Essex,
near CM7 5AJ

(--) Unknown
m. bet Mar 1848 and
Dec 1849 ? Braintree

Elizabeth French
b. abt May 1835
bu. 30 Sep 1835 Shalford,
Essex

Samuel French
b. bet Jan and Mar 1850
Great Saling, Essex
d. bet Jul and Sep 1879
Marylebone / aged 32 - not
to be confused with the
7-Mar-1879 death in
Marylebone aged 73

Henry Elms
m. bet Mar and Jun
1874 Kensington
d. bet Oct and Dec 1874
Brentford, Middlesex

Harry/Henry Elms
b. bet 1874 and 1875
Batterssea
d. bet Jan and Mar 1928 ??
Hatfield

??? Bessie L Lewsley

??? Norman Elms
b. 3 Mar 1929 ?? Hatfield
d. Apr 1988 ?? West Sussex

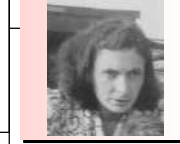
Martha J French
b. bet Jul and Dec 1845
Great Saling, Essex
d. bet Apr and Jun 1928
Brentford, Essex

Thomas MacVicar
b. bet Oct and Dec 1851
Casbebourne, Sussex
m. bet Jul and Sep 1887
Brentford, Essex
d. aft 1920 ?



Mary Ann Thorogood
Scott
b. 3 Feb 1880
Limehouse, Middlesex,
E14 7JP / 45 Church
Row [Newell Street]
Limehouse, Stepney,
London, E14 7JP
m. 25 Sep 1907 St
Mary, Prittlewell,
Southend-on-Sea,
Essex, SS2 6JR
d. 11 Nov 1968
Hadleigh, Benfleet,
Essex, previously SS7
2EE / 667, Lomdon
Road, Hadleigh,
BENFLEET, Essex, SS7
2EE having been living
at 5 Glenwood Avenue,
Westcliff-on-Sea, SS0
9DJ

Charles Clifford French
b. 14 Jan 1922
Southend-on-Sea, Essex
d. 8 Oct 1981
Southend-on-Sea, Essex



Marie Kathleen French
b. 11 Jan 1918
Southend-on-Sea, Essex
d. 16 Apr 2002
Southend-on-Sea, Essex

?? Ann French
b. bef 6 Oct 1788 ??
Finchingfield, Essex / Is this
a mis-writing of 26-Oct-1788
for Jane?

Jane French
b. bef 26 Oct 1788
Finchingfield, Essex
d. bef 17 Mar 1816 Braintree

Unknown

? Jane French
d. bef 21 Mar 1816 Braintree

Eliza French
b. abt 1815 Messing, Essex

Maryann French

Fred French

Emily Osborne
b. bet 1871 and 1872
Great Wakering, Essex

William French
b. 1846 Birch, Essex
d. 1915

Luther C French

Annie Unknown
b. bet 1875 and 1876
Lambeth, London

Ann Matilda French
b. 1850 Canewden
m. 1872 Great
Wakering, Essex
d. 1916

William French
b. 1878 Great Wakering,
Essex
d. 1943

Emmar Haggar
b. 1878
m. aft 1901
d. 1938

Unknown French

Ernest D French

Ethel Goodman

Alice Belton

George French
b. abt 1818 Messing, Essex
d. 1877

Emma Elizabeth Martin
b. 1821 Layer Marney,
Essex
m. 1842 Birch
d. aft 1881

Dorothy Eva French
b. 1901 Southend-on-Sea,
Essex
d. 1985

Ivy French
b. 1902 Southend-on-Sea,
Essex
d. 1989

Gladys Eve French
b. 1904 Southend-on-Sea,
Essex
d. 1947

Walter Clifford French
b. 29 Jul 1906
Southend-on-Sea, Essex
d. Mar 1988 Chelmsford,
Essex

Marjorie French
b. 1909 Southend-on-Sea,
Essex
d. 1983

John French
b. bef 27 Jan 1732 Felsted,
Essex
d. bef 21 Aug 1791
Finchingfield, Essex, near
CM7 4NP

Elizabeth Bowles
b. bef 2 Dec 1733
Hempstead, Essex
m. 24 May 1756 St
Andrew, Hempstead,
Essex, CB10 2PD
d. bef 18 Aug 1782
Finchingfield, Essex,
near CM7 4NP

Eliza Ann Cole
b. 1846
m. 1869 Birch
d. Dec 1870 Great
Wakering, Essex

Walter William French
b. bef 7 Dec 1870 Great
Wakering, Essex
d. 1945

Amy Louisa Archer
b. 1877
m. 1899 Wimbledon
d. 1943

Hilda May French
b. 1912 Southend-on-Sea,
Essex
d. 2002

Joan Edna French

Emma French
b. bet 1848 and 1849 Birch,
Essex

George French
b. abt Feb 1851 Birch, Essex

Matilda French

Thomas Whybrow

Harry Whybrow
b. bet 1870 and 1871

Sarah French
b. bet 1855 and 1856 Birch,
Essex

Henry French
b. bet 1859 and 1859 Birch,
Essex

Sarah Unknown
b. bet 1856 and 1857
Wethersfield, Essex

Mary French
b. abt 1820 Messing, Essex

Martha French
b. abt 1822 Messing, Essex
d. 1843

Ann Matilda French
b. 1850 Canewdon
d. 1916

William French
b. 1845 Birch, Essex
m. 1872 Great
Waking, Essex
d. 1915

**Florence Ann Matilda
French**
b. bet Apr and Jun 1876
Great Waking, Essex

Arthur Edgar Everett
b. bet 1876 and 1877
Hadleigh, Suffolk
m. bet Jul and Sep 1901
Rochford, Essex

Charles French
b. abt 1824 Messing, Essex
d. Jul 1900 Great Waking,
Essex

Charles Henry Clay French
b. 1854 Great Waking,
Essex

Henry Charles Clay French
b. 18 Jun 1879 Great
Waking, Essex

Ann Clay
b. 1835
m. 1850 Canewdon
d. 1856

Eunice Moles
b. abt 1857 Foulness
Island, Essex
m. bet Jan and Mar
1876 Rochford, Essex

? Emelyn Kemp
b. abt 1879
Southampton,
Hampshire
m. bet Jan and Mar
1904 Rochford, Essex

Algar Edward French
b. 17 Nov 1885 Great
Waking, Essex

Charles French
b. bet 1784 and 1785 Birch,
Essex
d. bet 1871 and 1881
Messing?

Elizabeth Godfry
b. bet 1795 and 1796
Layer Marney, Essex
m. 1815 Aldham
d. bet 1871 and 1881
Messing?

?? John French
b. bef 1641 ?? Felsted,
Essex
d. bef 19 Nov 1695 Felsted,
Essex

Mary Unknown
m. Unknown Felsted,
Essex / ? [no marriage
records there 1642-94]
d. bef 28 Mar 1700
Felsted, Essex

Anthony French
b. bef 18 Feb 1759
Finchingfield, Essex
d. 1808

Elizabeth Wiffing
b. bef 5 Mar 1730
Haverhill, Suffolk
m. 8 Jul 1785 Birch,
Essex

Thomas French (?)
b. bet 1786 and 1787
Wethersfield, Essex
d. bet 1861 and 1871

Sarah Unknown
b. bet 1787 and 1788
Wethersfield, Essex
d. aft 1871 ?

Sarah Unknown
b. abt 1827
d. 1874

Daniel French
b. abt 1826 Messing, Essex

Maria A Unknown
b. bet 1827 and 1828
Birch, Essex

Emma French
b. abt 1831 Messing, Essex
d. 1847

Susannah French
b. abt 1812 ? Wethersfield,
Essex

? Ann French
b. bet 1814 and 1815 ?
Finchingfield, Essex

Henry French
b. bet 1842 and 1846
Wethersfield, Essex

Sarah Unknown
b. bet 1846 and 1847
Wethersfield, Essex

Susan French
b. bet 1865 and 1866
Wethersfield, Essex

Harriett French
b. bet 1867 and 1868
Toppesfield, Essex

Emily French
b. bet 1869 and 1870
Toppesfield, Essex

Ellen French
b. bet 1872 and 1873
Toppesfield, Essex

Thomas French
b. bet 1874 and 1879 Sible
Hedingham, Essex

John French
b. bet 1878 and 1879 Sible
Hedingham, Essex

Harry French
b. bet 1881 and 1882 Sible
Hedingham, Essex

? Edith E Lake
b. abt 1896 South
Ockendon, Essex
m. bet Jul and Sep 1911
Orsett, Essex

Victor Louis French
b. 17 Apr 1916 Southend on
Sea
d. 13 Sep 2009

Eunice Sarah French
b. 15 Jul 1887 Great
Wakering, Essex

Harriet French

Sarah French

Thomas French
b. bet 1816 and 1819
Wethersfield, Essex

Louisa Unknown
b. bet 1823 and 1824
Wethersfield, Essex

Annie French
b. bet 1883 and 1884
[Thomas Tomkins Lunatic
Asylum], Maldon Road,
Witham, Essex, near CM8
1FX / near to -

Arthur French
b. bet 1887 and 1888
[Thomas Tomkins Lunatic
Asylum], Maldon Road,
Witham, Essex, near CM8
1FX / near to -

Minnie French
b. bet 1889 and 1890
[Thomas Tomkins Lunatic
Asylum], Maldon Road,
Witham, Essex, near CM8
1FX / near to -

Sarah French
b. bet 1845 and 1846
Wethersfield, Essex

Mary Ann French
b. bet 1848 and 1849
Wethersfield, Essex

Harriet FRENCH
b. abt Mar 1851
Wethersfield, Essex

Caroline French
b. 1825 ? Wethersfield,
Essex

Harriet French
b. 1828 ? Wethersfield,
Essex

Sarah French
b. 1832 Wethersfield, Essex

Tamar French
b. abt 1790 Birch
d. 1853

Joseph Norfolk
b. abt 1786
m. 1826 Colchester
d. 1865

Joseph Norfolk
b. abt 1828

Rachel Royce

Joseph Norfolk
b. 1857

Elizabeth Rachel Norfolk
b. 1859

Louisa Norfolk
b. 1860

Emma Norfolk
b. abt 1829

George Norfolk
b. abt 1830

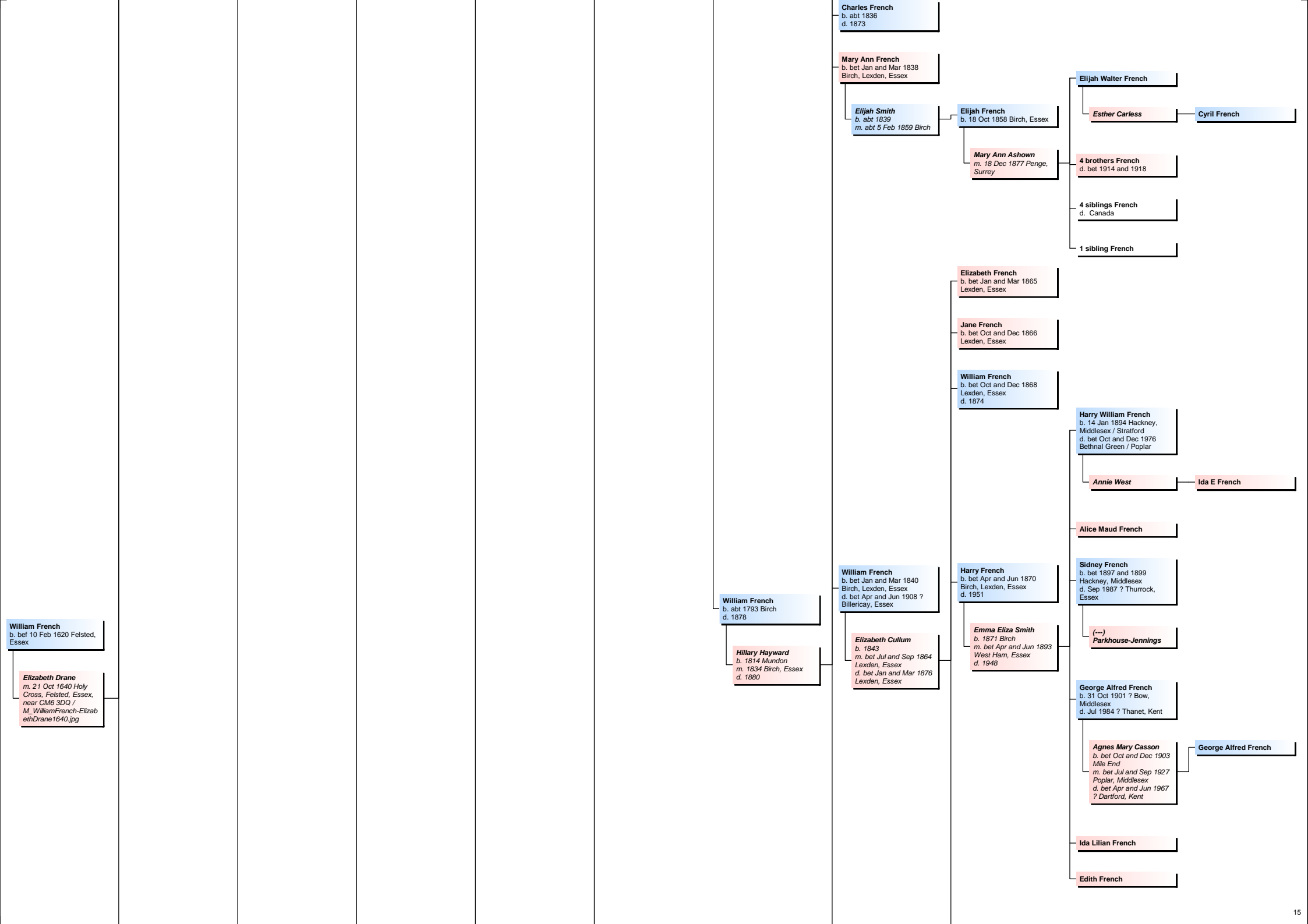
Thamar Norfolk
b. abt 1831

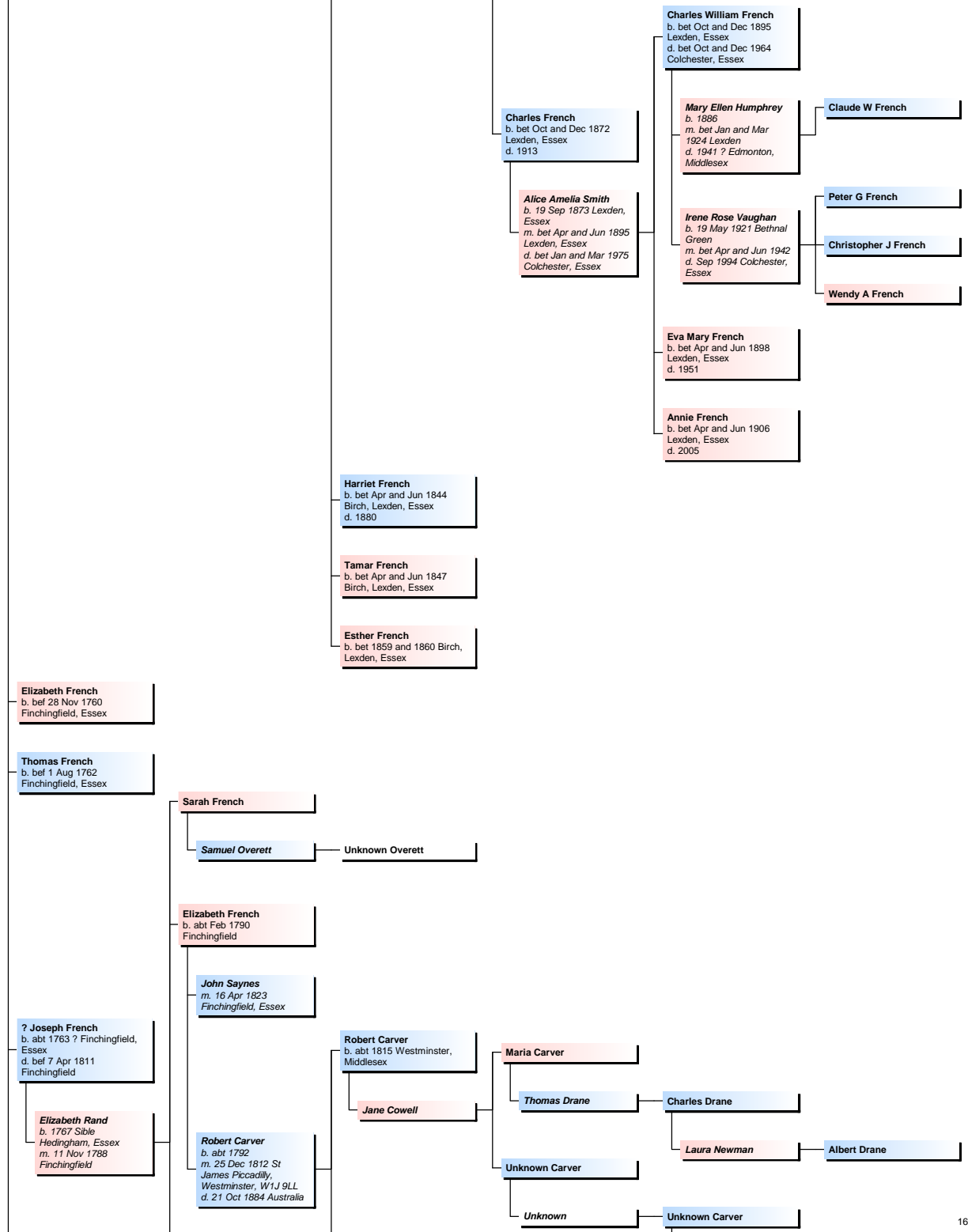
James Norfolk
b. abt 1836

Henry French
b. abt 1834 Birch, Essex
d. 1851

Sarah Unknown

Emma French





Samuel French
b. bef 1 Mar 1642 Felsted,
Essex

Mary French
b. bef 14 Aug 1665 Felsted,
Essex

Richard French
b. abt 7 Jul 1706 Felsted,
Essex

Samuel French
b. bef 16 Dec 1701 Felsted,
Essex

Mary French
b. bef 7 Dec 1696 Felsted,
Essex

Elizabeth French
b. bef 23 Aug 1737 Felsted,
Essex

Judith French
b. bef 5 Mar 1733 Felsted,
Essex
d. bef 28 Dec 1735 Felsted,
Essex

Charles French
b. bef 20 Sep 1778
Finchingfield, Essex
d. 1792

Martha French
b. bef 4 May 1775
Finchingfield, Essex

Thomas Martin
m. 7 Nov 1793
Finchingfield

Mary French
b. bef 22 Jul 1770
Finchingfield, Essex
d. 1811

? Mary Unknown

? William French
b. abt Jun 1795 Finchingfield

William French
b. bef 20 Mar 1768
Finchingfield, Essex

James French
b. bef 10 Nov 1765
Finchingfield, Essex

Joseph French
b. abt Feb 1796
Finchingfield

Unknown

? Henry French
b. abt 1823 Bocking

William French
b. abt Aug 1793
Finchingfield

Maria Carver

Unknown

Unknown Carver